

Selenium Pellet – Dry shot



NIPPON RARE METAL, INC.

No. 1200, Nakayama-cho, P.O.Box 7, Midori-ku
Yokohama 226-8691, Japan

TEL:045-931-4841 FAX:045 932-8401

URL:www.nrm-inc.co.jp e-mail:info@nrm-inc.co.jp

Typical Specification

Unit: ppm

Element	Al	As	Bi	Cd	Cr	Cu	Fe	Te	Hg	Ni	Pb	Sb	Zn	S
4N-grade Impurity Limit	≤5	≤5	≤5	≤5	≤5	≤5	≤5	≤10	≤5	≤5	≤5	≤5	≤5	≤5
Typical data	< 1	< 3	< 3	< 1	< 1	< 1	< 1	3	< 1	< 1	< 3	< 3	< 1	< 1

Element	Al	As	Bi	Cd	Cr	Cu	Fe	Te	Hg	Ni	Pb	Sb	Zn	S
5N-grade Impurity Limit	< 1	< 1	< 1	< 1	< 1	< 1	< 1	< 1	< 1	< 1	< 1	< 1	< 1	< 1

* Standard packaging: 25kgs Selenium granules in a 20-liter pail (Inner Al bag packaging shall be an option).



Inner Al bag purged with N2 gas

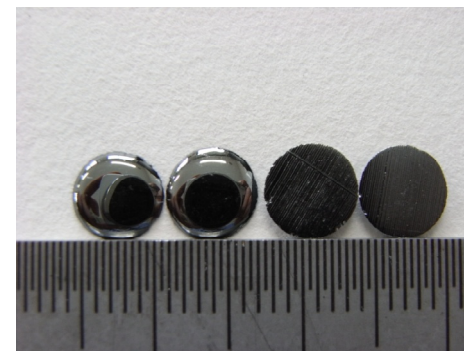


Left : 20-liter pail

Right : 13-liter pail for smaller volume

* To keep the Selenium in amorphous state, please store in dark and cool (less than 20°C) place and keep away from direct sunlight.

* Photos



Pellet Size :
about 4-8mm